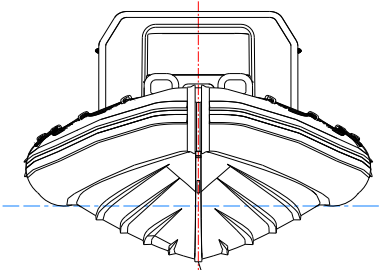
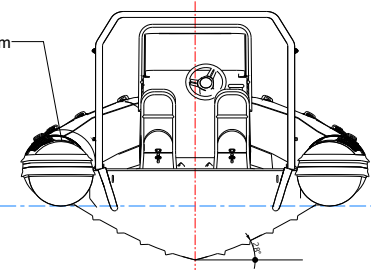
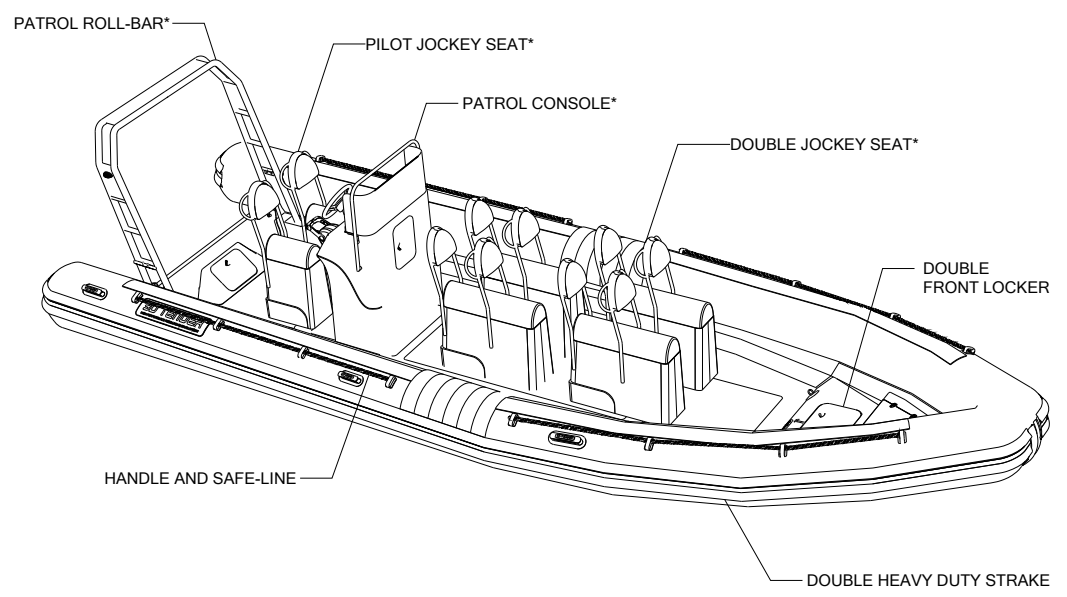
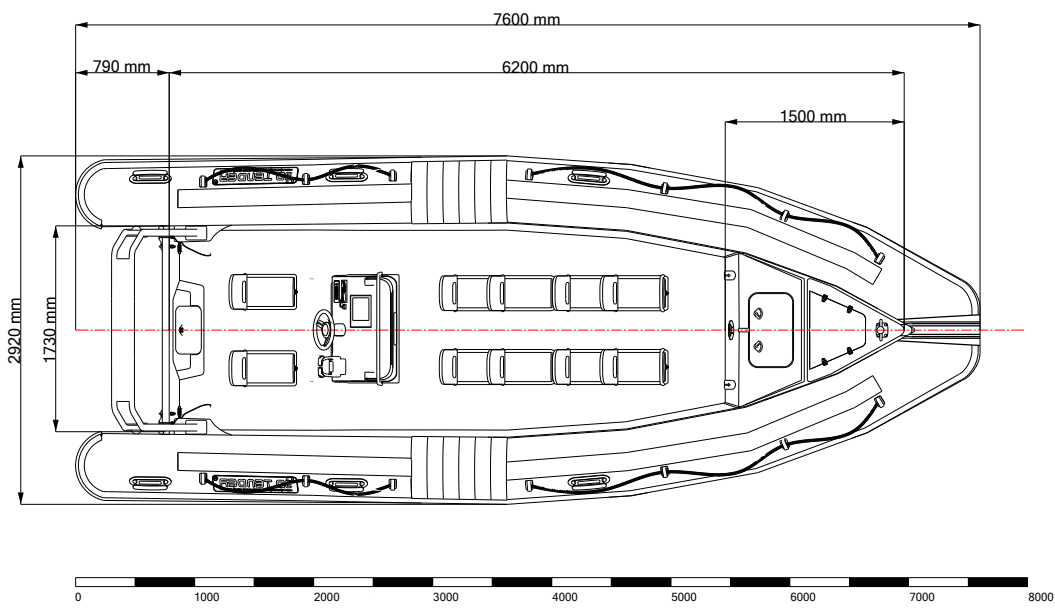


Ø 550 mm



KEEL PROTECTION



GENERAL ARRANGEMENT

PATROL 760



MAIN FEATURE PATROL 760	
LENGTH OVERALL	7.60 m
INTERIOR LENGTH	6.20 m
MAX WIDTH	2.92 m
INTERIOR WIDTH	1.73 m
DEPTH	1.49 m
TUBE DIAMETER	55 cm
NUMBER OF AIRTIGHT CHAMBERS	6
DEAD RISE TRANSOM	28"
DESIGN CATEGORY	C
HULL WEIGHT	900 kg
MAX LOAD	2836 kg
MAX NUMBER OF PASSENGERS	17
MAX MOTORIZATION	300 HP
Shaft	Simple XXL Double XL
FUEL TANK	300 L

OUTBOARD ENGINE SPECIFICATIONS		
MAX POWER	HP	KW
	300	220,70
MAX WEIGHT	KG	LB
	274	604
SHAFT	XXL	XL
	(1x300HP)	(2x150HP)
INCLUDED	CAPACITY	
	300L standard	300L standard

x20	
KG	LB
3110	6856

KG	LB
900	1984

AIR CHAMBERS : 6	

FIBERGLASS HULL
TUBE INFLATION PRESSURE 0.25 BAR
ISO 6185 - C
CE
For more info : www.3dtender.com

*Optional equipment

This plan is the property of Samy BOUBEZARI, naval architect. It may not be used for construction, sold, reproduced or communicated to third parties without authorization. Law of 01.07.1992

Specification subject to change without notice. Tolerances dimensions and weight (±)10%